

# EQUIPMENT AVAILABLE FOR RENT



## RAILAVATOR (High-Rail Excavator)

RAILAVATOR - MODEL	50G	85P	135P	210P	245P	250P	350P
WEIGHT	15,200	25,500	38,500	61,720	68,750	68,450	82,500
HP	35.9	56.9	97	159	159	188	271
WIDTH	8'6"	8'6"	8'6"	10'6"	10'6"	10'6"	10'6"

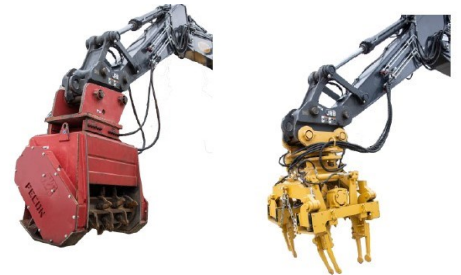


## ON TRACK EQUIPMENT

TIE CRANE - MODEL	WEIGHT	HP	WIDTH
TC75 or TC85 (3rd Rail)	19,920	56.9	8'3"
SWING LOADER - MODEL	WEIGHT	HP	WIDTH
Series V	33,500	166	8'6"
Series V (3rd Rail)	33,500	166	8'6"
CARTS - MODEL	MAX CAPACITY	WEIGHT	DIMENSIONS
Side Dump Cart	40,000 lbs	10,500 lbs	20'6" x 8'6"
Material Cart	40,000 lbs	6,300 lbs	16' x 8'3"
Tie Handling Cart	40,000 lbs	5,500 lbs	12' x 8'3"
TRAILERS - MODEL			
10 Ton			
20 Ton			
25 Ton			

## ATTACHMENTS

TILTROTATOR - MODEL	MACHINE WEIGHT	WEIGHT	BKT WIDTH, MAX
R3	13,230 - 26,455	661	59"
R4	22,045 - 35,275	838	63"
R6	37,480 - 52,910	1257	71"
R8	50,705 - 70,550	1676	79"
BRUSH CUTTER - MODEL	MACHINE WEIGHT	WEIGHT	WIDTH
BH40	30,000 - 90,000	3,150	51"
GRAPTOR BUCKET - MODEL	MACHINE WEIGHT	WEIGHT	BKT WIDTH
GR130	24,000 - 33,000	1855	38"
GR150	33,000 - 45,000	2155	42"
GR200	45,000 - 55,000	3175 - 3505	42" & 48"
GR250	55,000 - 65,000	3790 - 3835	48" & 54"
GR300	65,000 - 90,000	6981 - 7450	54" & 60"



UNDERCUTTER BAR - MODEL	LENGTH	RCE EXCAVATOR TIE HEAD - MODEL	UTILITY GRAPPLE - MODEL
135	8'	85	50
210/245	13'	135	85
		245	135
		310	245
PANEL LIFTER - MODEL	MACHINE WEIGHT		
350	70,000+		

COLD AIR BLOWER - MODEL
210
245
250
350



**INTERESTED?** Reach out for more information.  
[sales@rcequip.com](mailto:sales@rcequip.com)    [www.rcequip.com](http://www.rcequip.com)    (866) 472-4570

# EQUIPMENT AVAILABLE FOR RENT



## CONVENTIONAL EQUIPMENT

EXCAVATOR - MODEL	WEIGHT	HP	WIDTH	DIG DEPTH
35G	8,715	23.3	5'9"	11'4"
50G	12,251	35.9	6'7"	12'7"
85P RTS	19,621	67.6	7'7"	13'9"
135P RTS	32,962	101	8'6"	19'2"
210P LC	52,540	159	10'6"	21'4"
245P RTS	57,277	159	10'6"	20'10"
250P LC	57,736	188	11'3"	24'5"
300P LC	69,174	223	11'1"	25'4"
345P RTS	81,588	249	11'1"	24'4"
350P LC	80,985	271	11'2"	26'10"

LOADER - MODEL	WEIGHT	HP	BUCKET
524P	29,895	152	3.0
544P	32,589	166	3.25
624P	34,810	192	3.75
644P	41,324	249	4.5
724P	43,783	268	5.0
744P	58,709	316	5.5
824P	61,952	343	6.0-6.75
844P	76,670	417	7.25-8.0

BACKHOE - MODEL	WEIGHT	HP	DIG DEPTH
320P	18,026	99	18'2"
320P Hi-Rail		99	18'2"

MOTOR GRADER - MODEL	WEIGHT	HP
672	44,092	190-255
772	45,195	210-275

DOZER - MODEL	WEIGHT	HP	WIDTH
450P LGP	19,807	80	115"
550P LGP	22,055	92	115"
650P LGP	23,398	104	115-128"
700L LGP	33,375	135	145"
750L LGP	41,173	175	156"
850L LGP	52,469	225	168-172"

SKID STEER - MODEL	WEIGHT	HP	R.O.C. lbs
324	7,700	70	2,690
330	9,900	89	3,000
332	10,000	97	3,600

COMPACT TRACK LOADER - MODEL	WEIGHT	HP	R.O.C. lbs
317	8,423	61	2,125
325	9,650	70	2,590
331	11,900	88.5	3,100
333	12,100	96.6	3,700

## TRACK BOOM

TRACK BOOM - MODEL	STD BOOM LENGTH
85 TB	12'
135 TB	17'
210 TB	24.5'
245 TB	24.5'
250 TB	24.5'
350 TB	24.5'
470 TB	30'



## RAIL CAR MOVER

MODEL	TRACTIVE EFFORT	UP TO LOADED (CARS)
SWX315	27000 lbs	15 Cars
SWX420	30000 lbs	20 Cars
SWX525	35000 lbs	25 Cars
NVX5025	38000 lbs	25 Cars
NVX6030	45000 lbs	30 Cars
NVX7035	50000 lbs	35 Cars



**INTERESTED?** Reach out for more information.  
[sales@rcequip.com](mailto:sales@rcequip.com)   [www.rcequip.com](http://www.rcequip.com)   (866) 472-4570